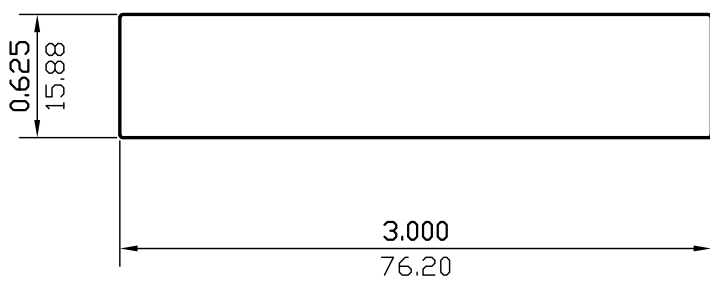


NOTE: BREAK ALL CORNERS WITH 0.015" (.38 MM) RADIUS UNLESS OTHERWISE NOTED. STANDARD TOLERANCES TO APPLY UNLESS OTHERWISE SPECIFIED.

CUSTOMER <b>CAN ART STD.</b>	DIE No. <b>ES04014</b>	REV. No. <b>1</b>
DESCRIPTION <b>0.625" x 3.000" FLAT BAR</b>	CUSTOMER PART No.	PROPOSAL No. <b>S-63334</b>
	QUOTE No. <b>L13-0276-5</b>	



WALL THICKNESS (AS SHOWN) EXCEPT AS SHOWN

DATE	REV	DESCRIPTION	BY
03/17/23	1	REMOVED ALLOY	JASON
EST.AREA	1.875	IN. <sup>2</sup>	EST.AREA
			1209.560
			MM. <sup>2</sup>
EST.WT.	2.250	LBS/FT.	EST.WT.
			3.348
			KG/M.
EST.PER.	7.224	IN.	EST.PER.
			183.496
			MM.
OUT PER.		IN.	OUT PER.
			MM.
C.C.D.	3.059	IN.	C.C.D.
			77.699
			MM.
FINISH	M/F		ALLOY
CKD BY	FACTOR	SCALE	DWN BY
	3	1:1	G.W.
			DATE
			06/27/2013

# CAN ART

**ALUMINUM EXTRUSION INC.**

428 JUTRAS DRIVE S.  
WINDSOR, ON N8N 5C5  
TEL. NO. (519) 727-4399  
FAX NO. (519) 727-6434  
WEB: [www.canart.com](http://www.canart.com)

THIS DRAWING IS NOT NECESSARILY A COPY OF YOUR ORIGINAL. PLEASE APPROVE DIMENSIONS AND TOLERANCES INDICATED. CAN ART ASSUMES NO RESPONSIBILITY EITHER TECHNICAL OR LEGAL FOR HAVING THIS SHAPE MADE. THE CUSTOMER AGREES TO FULLY PROTECT CAN ART ALUMINUM FROM CLAIMS OF OTHERS RESULTING FROM THIS SHAPE.

SIGNED: \_\_\_\_\_ DATE: \_\_\_\_\_