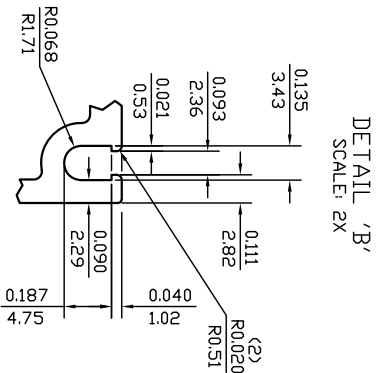
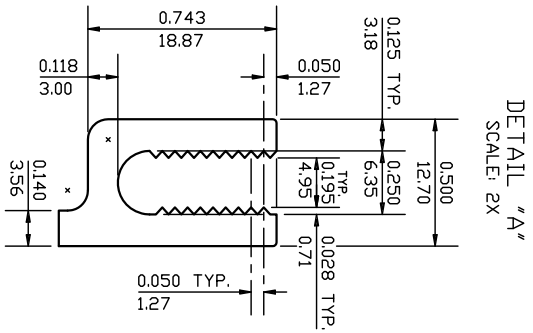
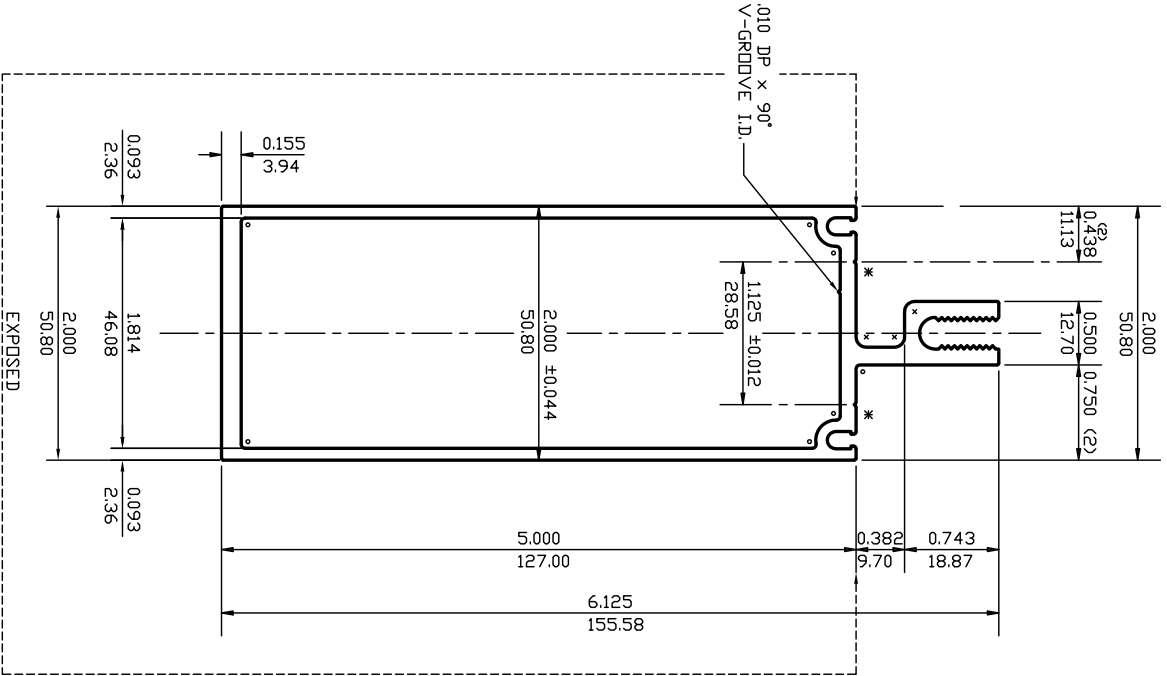


CUSTOMER	CAN ART OPEN		REV. NO.	1
DESCRIPTION	2" x 5" MULLION		QUOTE NO.	12-0793-1
	CUSTOMER PART NO.		PROPOSAL NO.	H-26670



(Ø) = THREAD TO SUIT A 1/4-20 SCREW
 (*) = 0.015(Ø.3Ø)D. X 90°
 (.) = 0.010(Ø.25) R
 (R) = 0.161(4.09) R
 UNMARKED RADII = RADIUS TO SUIT

WALL THICKNESS **0.093(2.36)** EXCEPT AS SHOWN

DATE	REV	DESCRIPTION	BY
08/07/12	1	CORRECTED DETAIL B	PAUL

EST. AREA	EST. AREA	EST. AREA	EST. AREA
1.749	1128.421	3.071	MM ²
2.064	818.948	492.0	MM
32.242	159.939	6063	MM
19.371			

FINISH	ALLOY	DATE
M/F	6063	08/03/2012

CAN ART
 ALUMINUM EXTRUSION INC.
 55 PARKSHORE DRIVE
 BRANTFORD, ONT. L7R 1S1
 TEL: (905) 791-9151
 FAX: (905) 791-9151
 WEB: www.canart.com

THIS DRAWING IS NOT NECESSARILY A COPY OF YOUR ORIGINAL. PLEASE APPROVE DIMENSIONS AND TOLERANCES INDICATED. CAN ART ASSUMES NO RESPONSIBILITY EITHER TECHNICAL OR LEGAL FOR HAVING THIS SHAPE MADE. THE CUSTOMER AGREES TO FULLY PROTECT CAN ART ALUMINUM FROM CLAIMS OF OTHERS RESULTING FROM THIS SHAPE.

SIGNED: _____ DATE: _____

NOTE: BREAK ALL CORNERS WITH 0.015" (.38 MM) RADIUS UNLESS OTHERWISE NOTED. STANDARD TOLERANCES TO APPLY UNLESS OTHERWISE SPECIFIED.