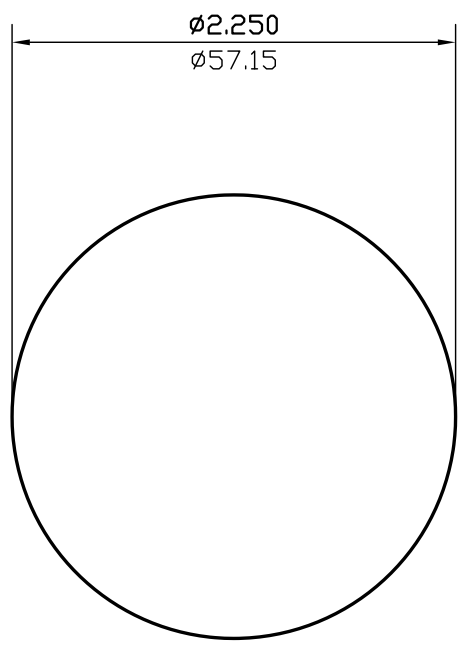


NOTE: BREAK ALL CORNERS WITH 0.015" (.38 MM) RADIUS UNLESS OTHERWISE SPECIFIED. STANDARD TOLERANCES TO APPLY UNLESS OTHERWISE SPECIFIED.

CUSTOMER <b>CAN ART STD.</b>	DIE No. <b>ES05880</b>	REV. No. <b>1</b>
DESCRIPTION <b>2.25" ROD</b>	CUSTOMER PART No.	PROPOSAL No. <b>S-55608</b>
	QUOTE No. <b>L07-0449-4</b>	



WALL THICKNESS (AS SHOWN) EXCEPT AS SHOWN

DATE	REV	DESCRIPTION	BY
03/16/23	1	REMOVED ALLOY	JASON
EST.AREA	3.976	IN. <sup>2</sup>	EST.AREA
			2565.227
			MM. <sup>2</sup>
EST.WT.	4.771	LBS/FT.	EST.WT.
			7.101
			KG/M.
EST.PER.	7.069	IN.	EST.PER.
			179.542
			MM.
OUT PER.		IN.	OUT PER.
			MM.
C.C.D.	2.250	IN.	C.C.D.
			57.150
			MM.
FINISH	M/F		ALLOY
CKD BY	FACTOR	SCALE	DWN BY
	1	1:1	L.G.
			DATE
			05/22/2008

# CAN ART

ALUMINUM EXTRUSION INC.

428 JUTRAS DRIVE S.  
WINDSOR, ON N8N 5C5  
TEL. NO. (519) 727-4399  
FAX NO. (519) 727-6434  
WEB: www.canart.com

THIS DRAWING IS NOT NECESSARILY A COPY OF YOUR ORIGINAL. PLEASE APPROVE DIMENSIONS AND TOLERANCES INDICATED. CAN ART ASSUMES NO RESPONSIBILITY EITHER TECHNICAL OR LEGAL FOR HAVING THIS SHAPE MADE. THE CUSTOMER AGREES TO FULLY PROTECT CAN ART ALUMINUM FROM CLAIMS OF OTHERS RESULTING FROM THIS SHAPE.

SIGNED: \_\_\_\_\_ DATE: \_\_\_\_\_