

NOTE: BREAK ALL CORNERS WITH 0.015" (.38 MM) RADIUS UNLESS OTHERWISE NOTED. STANDARD TOLERANCES TO APPLY UNLESS OTHERWISE SPECIFIED.

CAN ART
ALUMINUM EXTRUSION INC.

CUSTOMER PART No.

CUSTOMER

CAN ART OPEN

DIE No.

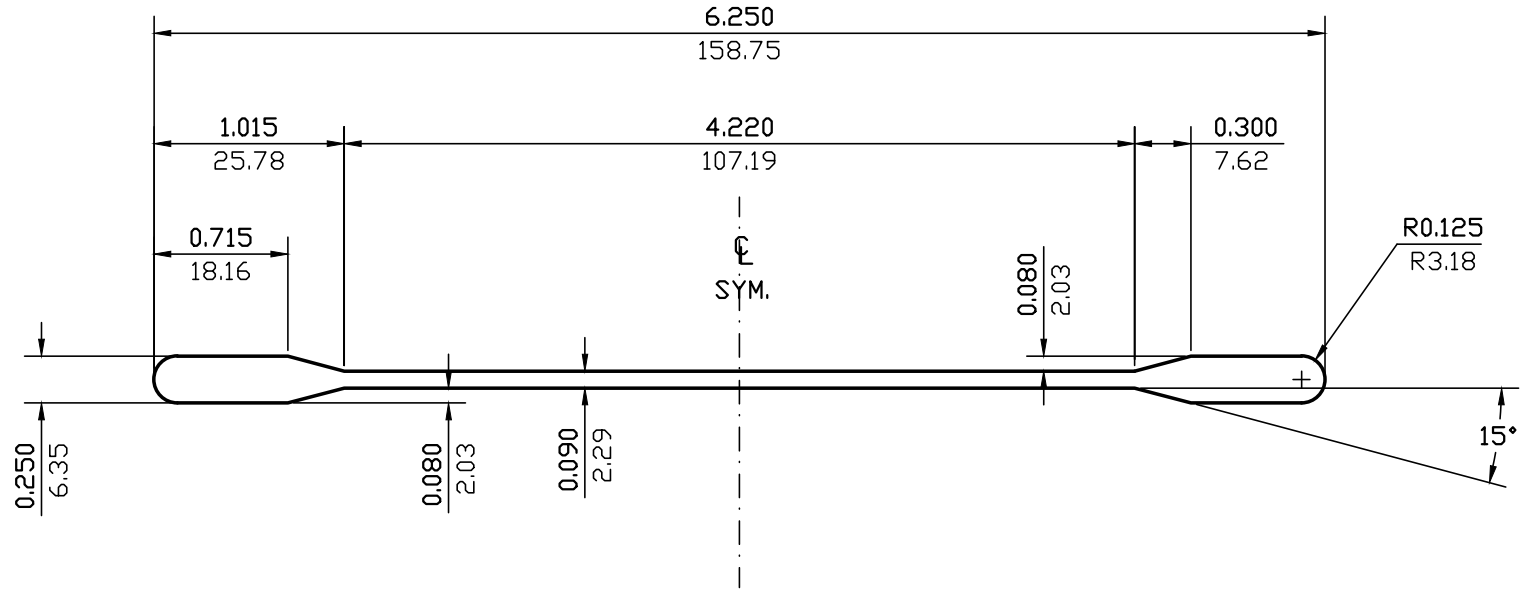
ES11256

DESCRIPTION

6-1/4" BLADE

PROPOSAL No.

S-10227



WALL THICKNESS (AS SHOWN) EXCEPT AS SHOWN

DATE	REV	DESCRIPTION	BY	EST.AREA	EST.WT.	EST.PER.	OUT PER.	C.C.D.	FACTOR	FINISH	ALLOY & TEMP.	CKD BY	SCALE	DWN BY	DATE
				0.826	0.975	12.827		6.250	13	M/F	6063		1:1	C.P.	09/25/2000
				IN. ²	LBS/FT.	IN.	IN.	IN.							
				532.834	1.450	325.814		158.750							
				MM. ²	KG/M.	MM.	MM.	MM.							

THIS DRAWING IS NOT NECESSARILY A COPY OF YOUR ORIGINAL. PLEASE APPROVE DIMENSIONS AND TOLERANCES INDICATED. CAN ART ASSUMES NO RESPONSIBILITY EITHER TECHNICAL OR LEGAL FOR HAVING THIS SHAPE MADE. THE CUSTOMER AGREES TO FULLY PROTECT CAN ART ALUMINUM FROM CLAIMS OF OTHERS RESULTING FROM THIS SHAPE.

SIGNED: _____ DATE: _____